

Cuoremani SS 25
guidelines

TOPP ITALIA
INSPIRED BY TEXTILES

La primavera estate 2025 di Topp Italia pone al centro l'unione fra le nostre abilità creative e le personalizzazioni richieste dai clienti. Una collezione che abbraccia e tiene insieme il nostro modo di lavorare, l'armonia con la natura, l'innovazione stilistica e la collaborazione fra le maestranze.

E' in alcuni casi un ritorno a lavorazioni artigianali, lente e fatte a mano, sulle quali formiamo i nostri futuri talenti.

Gli articoli topp italia vengono lavorati per diventare pezzi unici non replicabili, sempre eleganti, spesso performanti.

I denim, must-have della stagione, sono proposti in preziose rouge e lavorazioni ad intreccio, talvolta abbinata a macro profili di paillettes che ispirano linee gioiello.

Le passamanerie in seta e pelle originano dicotomie e mescolanze con ricercati tessuti tecnici.

I materiali naturali, come il cotone e il lino, vengono lavorati con giochi di plissé e - se spalmati - diventano arricci geometrici ed iridescenti.

I tubetti di lame' e organza vengono impiegati per frange ricche e voluminose, quasi un accessorio, per arricchire i nuovi stili dell'estate.

Topp Italia's spring summer 2025 focuses on the combination of our creative skills and customizations required by customers.

A collection that embraces and holds together our way of working, harmony with nature, stylistic innovation and collaboration between workers.

It is in some cases a return to craftsmanship, slow and hand- made processings , on which we train our future talents.

The items topp italia are processed to become unique, not replicable pieces, always elegant, often performing.

The denim, must-have of the season, are proposed in precious ruffles and woven, sometimes merged with macro pipings made with sequins that inspire jewel lines.

Silk and leather trimmings originate dichotomies and mixes with sophisticated technical fabrics.

Natural materials, such as cotton and linen, are worked with pleated patterns and - if coated - become geometric and iridescent frills.

Lame and organza tubes are used for rich and voluminous fringes, almost an accessory, to enrich the new summer styles.

TOPP ITALIA
INSPIRED BY TEXTILES







P775 Mexico - Nelly Sorfilato mm.60



C1758 Mexico / Supergi / Spongy - Corsia mm.40



C1759 Mexico - Tubetto 4 Fili Lana mm.8



C1757 Mexico - Tubetto 4 Fiocchi mm.17



C1760 Mexico - Piegato mm.25





P771 Tulle A - 4 Nelly Cuciti



P773 Viola - Nelly Sorfilato mm.70



C1756 Organdis S - Tubetto mm.3



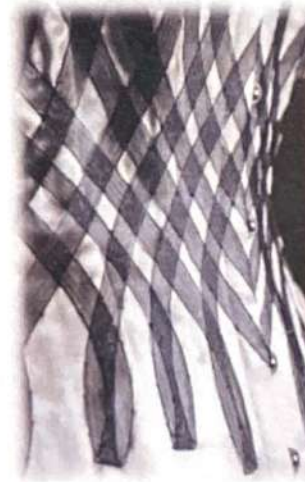
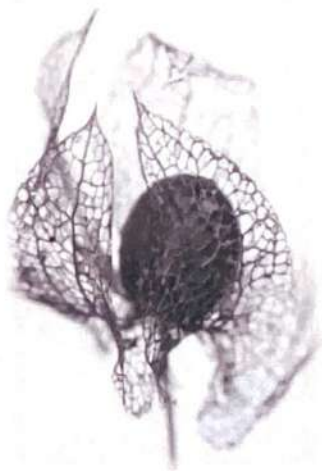
P772 Georgette - Lory mm.70



P774 Poly Silk - Giglio mm.35



C1736 Poly Silk - Tubetto Tondo 12 capi mm.5





C1750 NL - Girocoppe Doppio ZigZag mm.25



C1751 Douchesse - Piegato Impunturato mm.25



C1752 NL - Girocoppe mm.15



C1755 Ibiza Rec - Girocoppe mm.12



C1754 Tulle E - Treccia 3 Capi



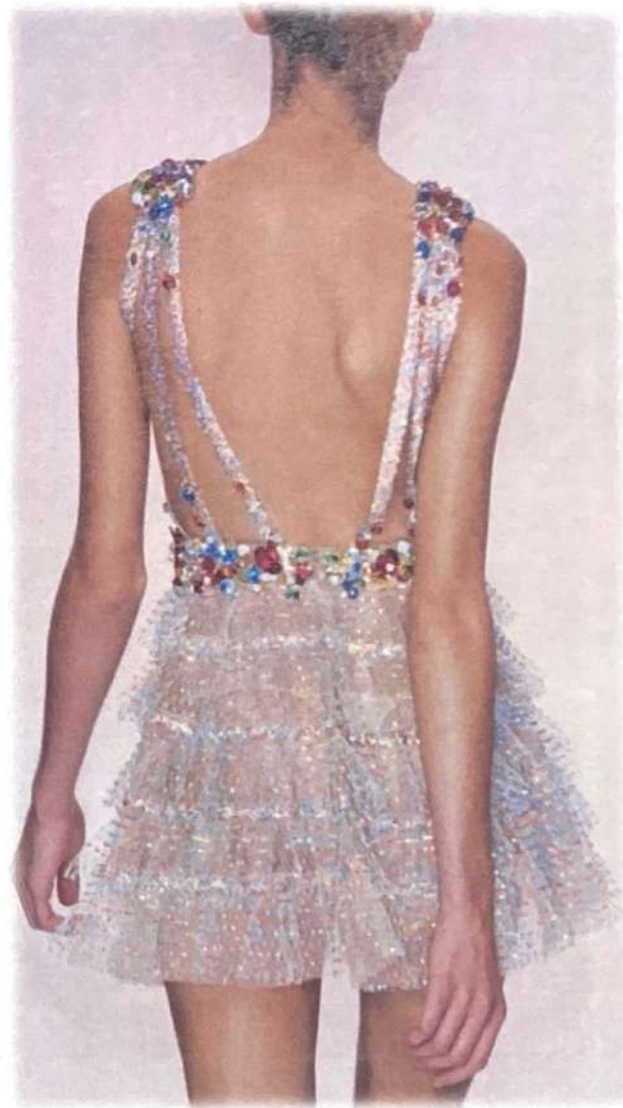
C1753 Tulle E - Tubetto mm.7



C1753 Tulle E - Tubetto mm.7



C 1823 Tulle A/Douchesse - Doppio Festone mm.20





C1743 Paillette 1 / Passafino mm.55



C1745 Bolero Star - Tubetto mm.5



C1748 S25 - Tubetto 8 Fili Lana mm.10



C1747 Bolero Star - Profilo Cord. Maxi mm.15

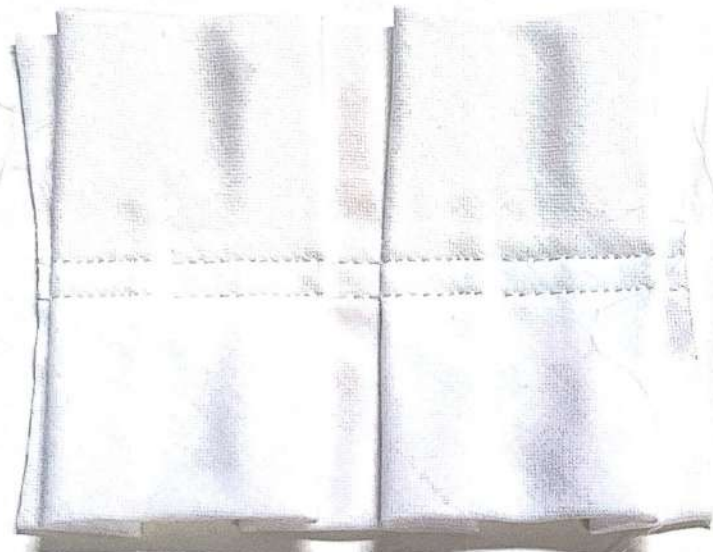


C1746 Paillette 1 / Tulle A - Profilo 6 Fili Lana mm.15



C1749 Bolero Star - Tubetto 2 Fiocchi mm.17





P769 Fco - Lory Doppio Passo Lungo mm.70



P770 Poly Silk - Nelly Sorfilato mm.60



C1744 Tulle A - Arricciato Elan Sorfilato mm.60



C1742 Cosmic - Arricciato mm.40





C1825 Organdis - Tubetto mm.4



C1736 Poly Silk - Tubetto Tondo 12 Capi mm.5



C1737 Douchesse - Piegato mm.25



C1738 Douchesse - Profilo Tondo 4 Capi mm.9



C1739 Crepe - Profilo Tondo 4 Capi mm.9



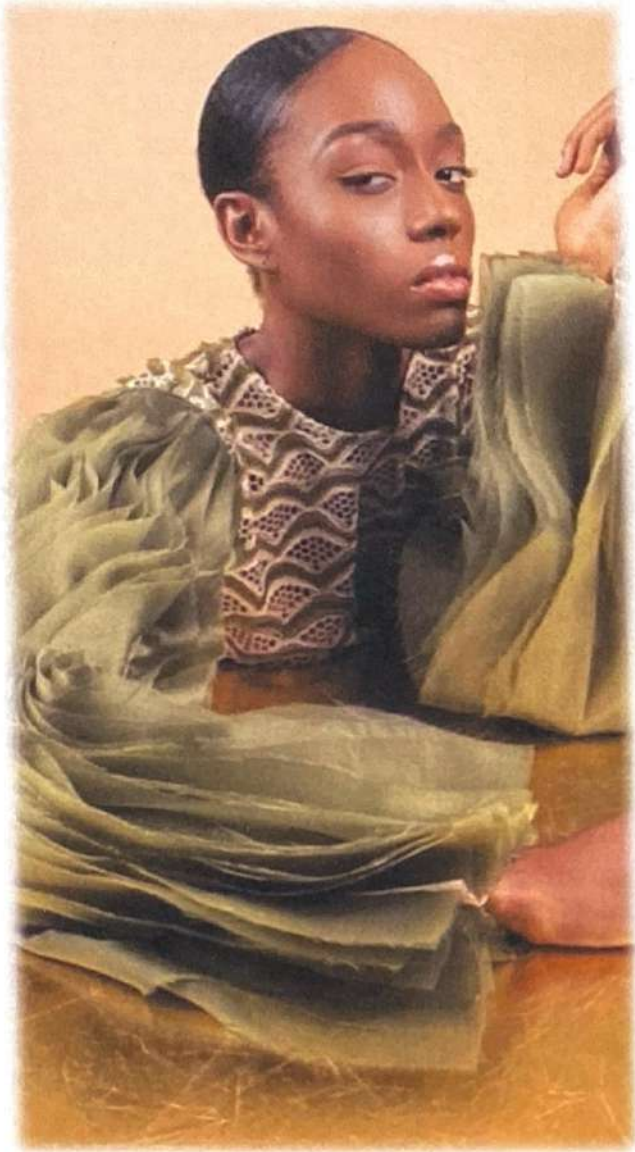
C1735 Organdis - Tubetto mm.5



C1740 Poly Silk - Treccia 5 Tubetti



C1741 Poly Silk - Profilo Tondo 12 Capi mm.15





P767 Poly Silk - Nelly mm.30



P768 Poly Silk - Farfalla mm.50



C1732 Cosmic - Tubetto QDR mm.4



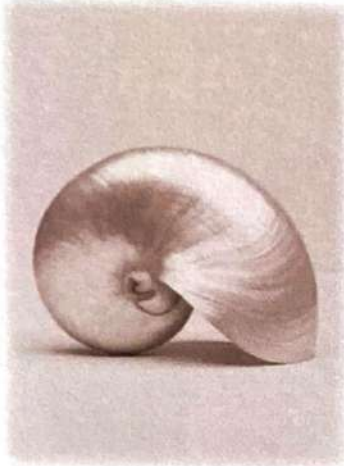
C1732 Cosmic - Tubetto QDR mm.4



C1733 Organdis Perl - Frangia Doppia Laser



C1734 Cosmic - Elan mm.50





C1761 Cosmic - Arricciato Doppio mm.40



C1763 Lamè 2 - Frangia mm.75



C1737 Douchesse - Piegato mm.25



C1762 Cosmic - Tubetto 10 Fili Lana mm.10



P776 S4 New 2 - Nelly mm.30





C1764 Denim Star - Arricciato Elan mm.50



P778 Denim Shine - Nelly mm.40



P777 Denim Star - Nelly mm.30



C1766 Denim Shine - Profilo mm.12



C1765 Denim Star - Tubetto 1 Fiocco mm.10



C1767 Denim Shine - Piegato mm.25





P779 Denim 16 - Farfalla mm.50



C1768 Denim 16 - Tubetto 1 Fiocco mm.10



C1769 Denim 16 - Piegato mm.18/9



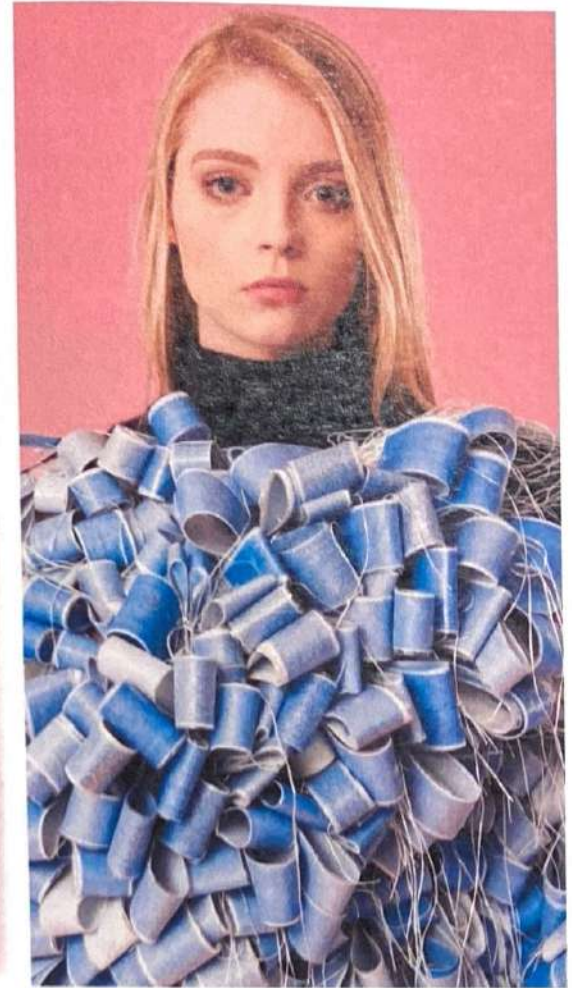
C1770 Denim 16 - Sfrangiato mm.40



C1771 Denim 16 - Piegato mm.30/14



C1772 Denim 16 - Tubetto mm.5





CP Patrizia Denim 6 / S39 / Stampati 5



C1773 Denim 6 - Coda Di Topo mm.10



C1774 Stampati 5 - Tubetto 1 Fiocco mm.10



C1775 Stampati 5 - Profilo mm.12/12



P780 Denim 16 - Lory mm.70



C1776 Stampati 5 - Tubetto 2 Fiocchi mm.17



C1777 Denim 17 - Mignon Impuntura mm.12





P781 Pongè - Giglio mm.65



C1779 Pongè - Arriccio mm.50



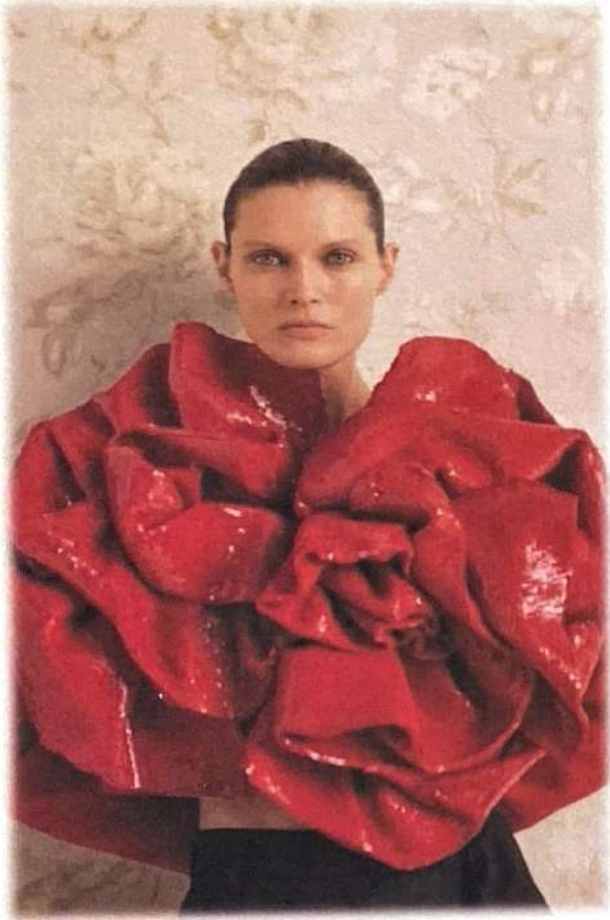
C1780 Tulle A - Tubetto Serpentina mm.20



C1778 Denim 17 / Passamaneria CD450/4



P782 Georgette - Nelly Sorfilato mm.40





C1781 S4 New 2 - Arricciato Elan mm.30



P783 S1 - Nelly 2 Cuciture laterali mm.25



C1782 S4 New 2 - Tubetto mm.5



C1782 S4 New 2 - Tubetto mm.5



C1783 S4 New 2 - Profilo mm.9



C1784 S4 New 2 - Profilo mm.12/12





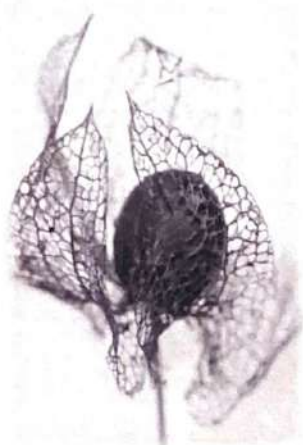
C1785 Organdis Perl - Frangia Tubetto mm.120



C1747 Bolero Star - Profilo Cordella Maxi mm.15



P784 Tulle A - Plissé + 3 Arricciati mm.15/150





C1786 Crepe - Frangia Tubetti mm.70



P785 Tulle A - Plissé Croc mm.75/110



C1275 Crepe - Tubetto Cordella A mm.5



C1787 Paillette 14 - Profilo Cordella M mm.15



C1749 Bolero Star - Tubetto 2 Fiocchi mm.17





C1819 Denim 16 - Frangia Laser mm.80



C1821 Denim 16 - Treccia 3 Tubolari



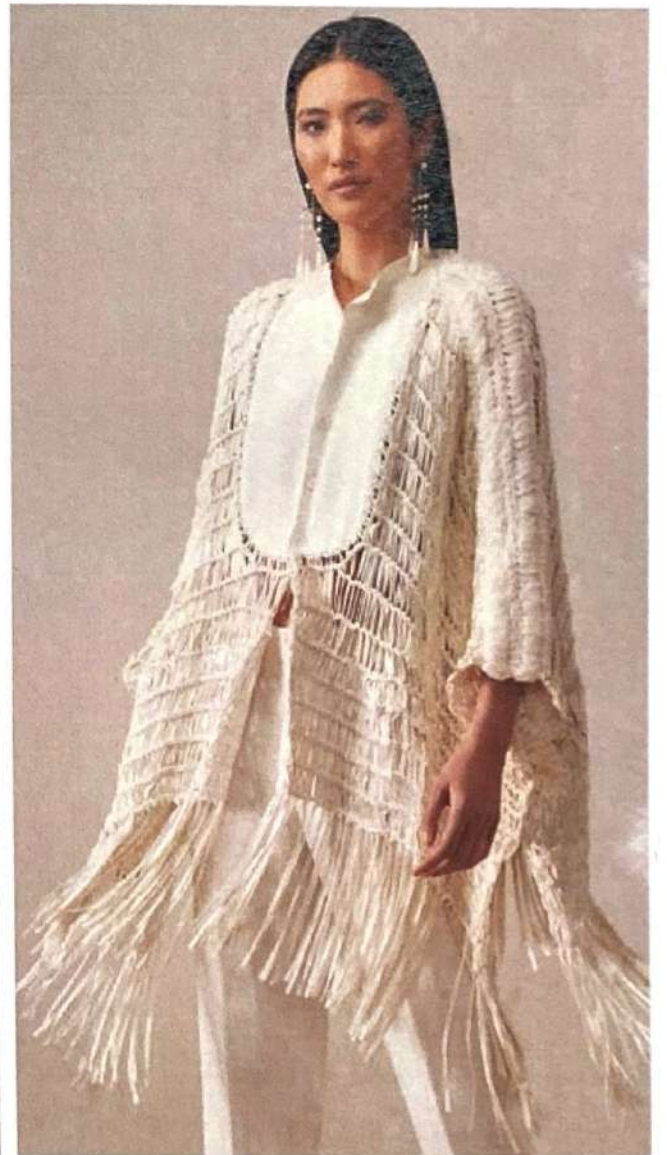
C1820 Denim 16 - Piegato Ricamato mm.25



C1820 Denim 16 - Piegato Ricamato mm.25



C1822 Denim 16 / S1 - Tubolare mm.20





C1788 Lino 3 - Banda 7 Nervature mm.90



C1789 Lino 3 - Tubolare mm.5



C1790 Lino 3 - Metà Piegato Doppio mm.15



C1791 Lino 3 - Sfrangiato mm.40



C1792 Bengala - Tubolare mm.8



C1793 Lino 3 - Profilo 3 Fiocchi mm.30





C1813 Denim 16 / S28 New - Tubolare mm.20



C1816 Dainetto - Tubolare mm.7



C1814 Drillo - Tubolare Piatto mm.28



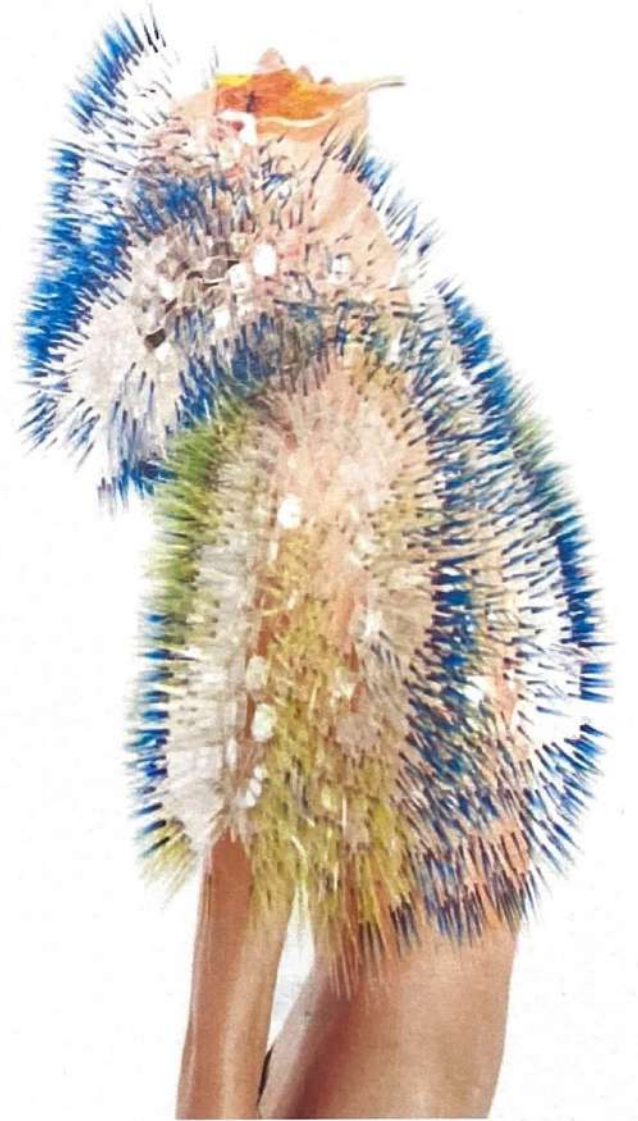
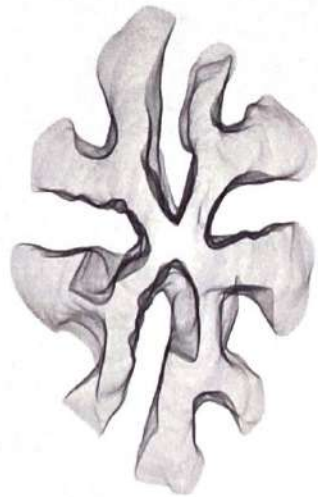
C1817 S28 New - Tubolare Piatto mm.28

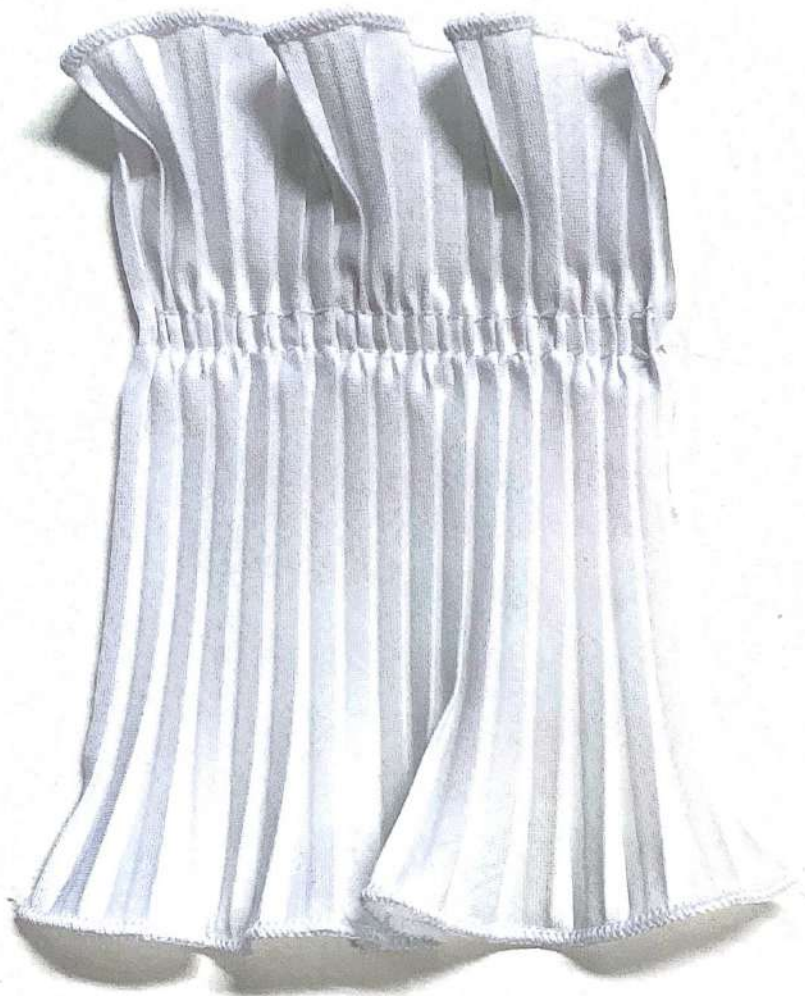


C1815 Drillo - Tubolare mm.7



C1818 Ask - Tubolare mm.7





P787 Pop - Arricciato Sorfilato mm.120



P788 Mussola - Nelly Ricam. Sorf. 1 Lato mm.80



C1805 Organdis - Tubetto mm.7



C1806 Organdis - Frangia Tubetti mm.70





C1801 Denim 17- Tubetto ric. 1 Fiocco mm.10



C1801 Denim 17- Tubetto ric. 1 Fiocco mm.10



C1802 Denim - Intreccio mm.60



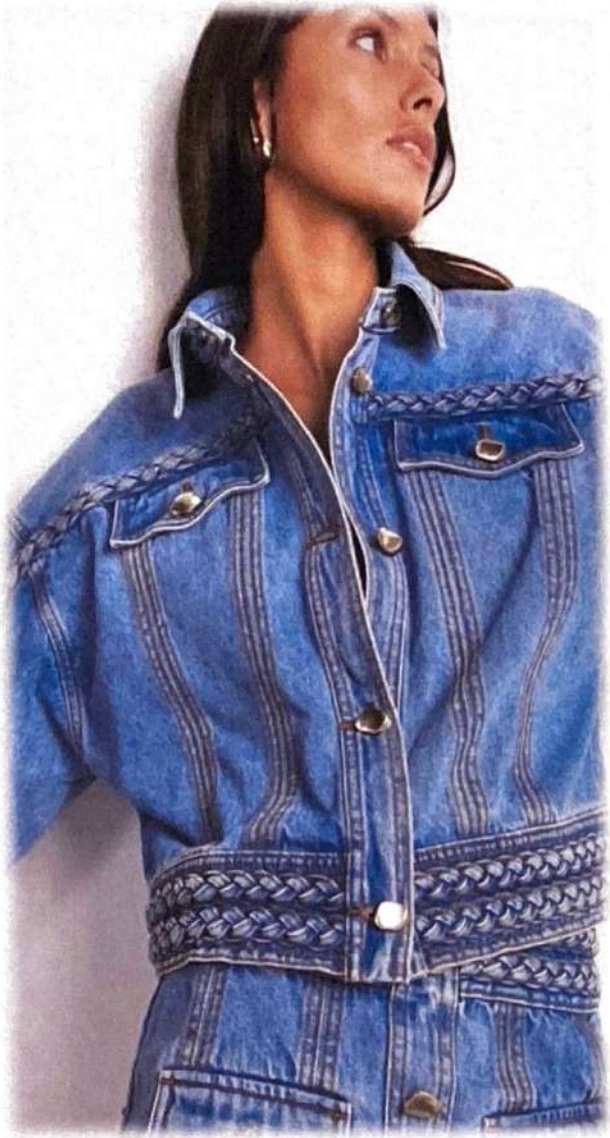
C1804 Denim 16 / Serpentina - Metà Piegato mm.25



C1803 Denim 16 - Mignon Impunturato Sorfilato



CP Patrizia Denim 16 / Logo / Terital





C1807 Denim 16 - Treccia Mignon+Catene



C1824 Denim 16 - Profilo Frastagliato+Catena mm.12



C1808 Lino 6 - Tubolare mm.5



C1809 Denim 16 - Profilo Bambola+Tagli mm.12



C1810 Denim 16 - Profilo Tagli mm.12



C1811 Denim 16 - Treccia 7 Mignon

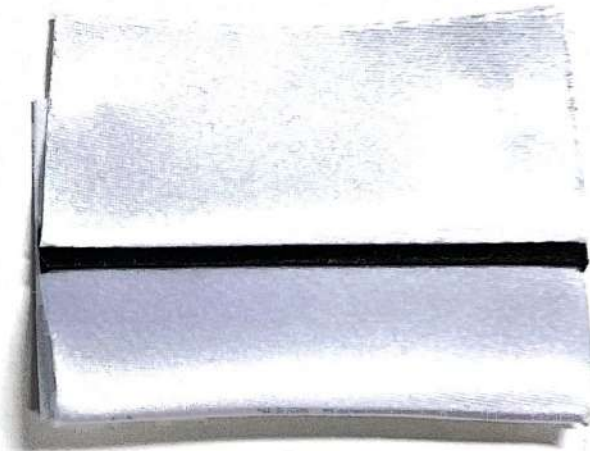


C1812 Crepe - Tubolare mm.5





P786 Mussola - Plissé Sorfilato mm.80



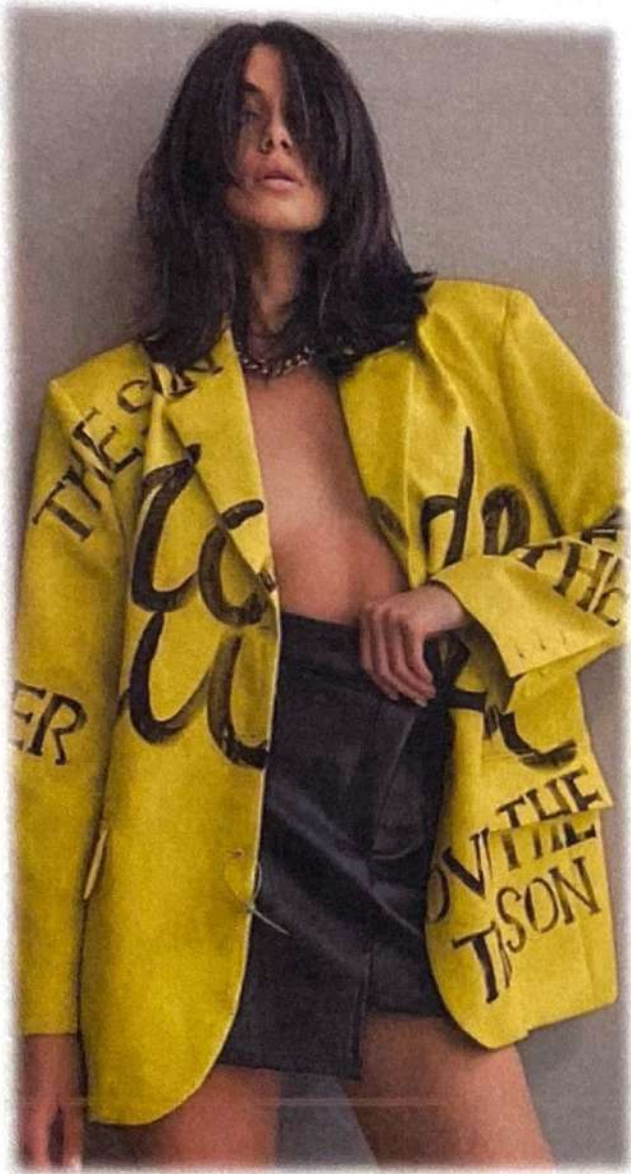
CP Patrizia Raso P / S39



CP Patrizia Douchesse / Crepe / LE



CP Patrizia Pongè / Crepe / LE





C1794 Doppioraso - Logo mm.40



C1795 Raso P - Profilo Logo mm.12



C1796 London ST - Profilo Logo mm.9/4



C1797 London ST - Profilo Logo mm.12/12



C1798 Douchesse ST - Profilo Logo mm.15+Cordella M



C1799 Posta - Profilo Logo mm.12/12



C1800 Douchesse - Arricciato Logo mm.50

