

Cuoremani FW 24/25

**TOPP** TECHNICAL  
INSPIRED BY TEXTILES

*L'Autunno-Inverno 24-25 spinge la nostra passione verso limiti che sperimentiamo per la prima volta. Verso un'operatività creativa e manifatturiera che utilizza materiali e tecniche spesso in competizione.*

*Le nostre mani esplorano movimenti e ritmi non usuali per mettere a punto articoli iper-artigianali che vanno oltre gli attributi della qualità e della longevità.*

*E' una operatività non ovvia che coinvolge la nostra emotività profonda, con impatti evidenti sui movimenti eclettici delle nostre creazioni e sulle soluzioni che offriamo ai nostri clienti.*

*Ci auguriamo che questo book, che raccoglie una minima parte del nostro impegno, sia di utile ispirazione per il vostro lavoro.*

*Autumn-Winter 24-25 drives our passion to boundaries we are experiencing for the first time. Towards a creative and manufacturing operation that uses often competing materials and techniques.*

*Our hands explore unusual moves and rhythms to develop super handmade items that go beyond the attributes of quality and durability.*

*It's a non-obvious operativity that involves our deep emotions, with evident impacts on the eclectic movements of our creations and on the solutions we offer to our customers.*

*We hope that this book, which brings together a small part of our efforts, will be a useful source of inspiration for your work.*

*La copertina di questo book è stata realizzata dagli scarti delle nostre lavorazioni.*

*The cover of this book was made from the scraps of our work.*

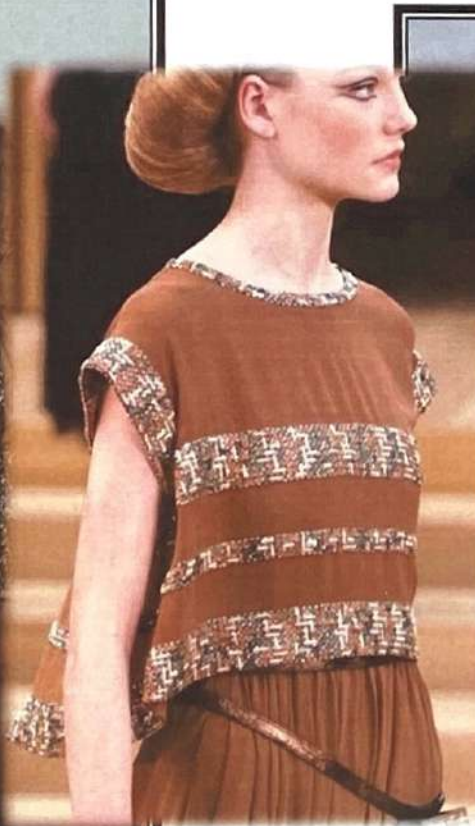
**TOPP** ITALIA  
INSPIRED BY TEXTILES

**OEKO  
TEX®**  
STANDARD  
100  
1005690.0  
CENTROCOT  
www.oeko-tex.com

GLOBAL ORGANIC TEXTILE STANDARD  
GOTS  
Certified by ICEA  
ICEA-TX-1143

Global Recycled  
Standard  
Certified by ICEA  
ICEA-TX-1143

# METALLIC GLOWS





C1616 Arturo - Intreccio 8 Tubetti mm.40



C1613 Arturo / Elastico Asolato H13 - Banda mm.45



C1614 Raso P / Rete L - Tubetto 1 Fiocco mm.15



C1615 Dentelle 10 / Tulle A - Tubetto Fili Lana 80 mm.15

# WATER STYLE





C968 Ibiza - Treccia 3 Lisci



C1620 Bolero 6 - Elan 2 Cuciture mm.50



C1642 Ibiza - Elan mm.50



C1622 Formentera - Frangia mm.60



C1623 Ibiza - Treccia 5 Tubetti

# SEQUIN STARS





CP Susy - R.I. / Grosgrain / Filo Paillette



C1631 Tulle Star - Frangia Tubetto mm.90



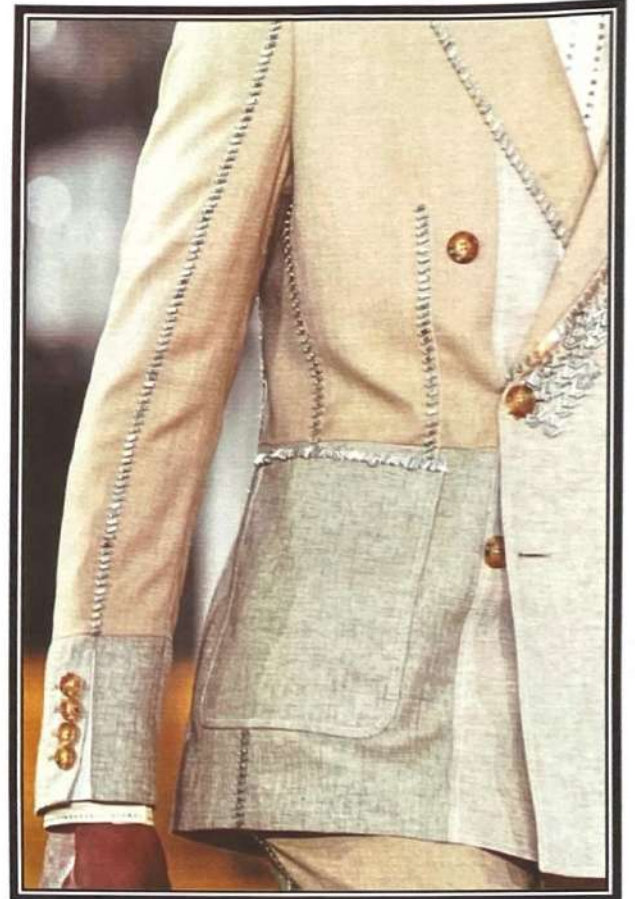
C1633 Roma 11 / Filo Paillette - Piegato mm.25



C1608 Bolero 6 - Arricciato mm.30



# PRECIOUS RIBBONS





CP Susy - R.I. / Cannelè / Filo Paillette



P755 Mussola - Lory Sorfilo + Croc mm.70

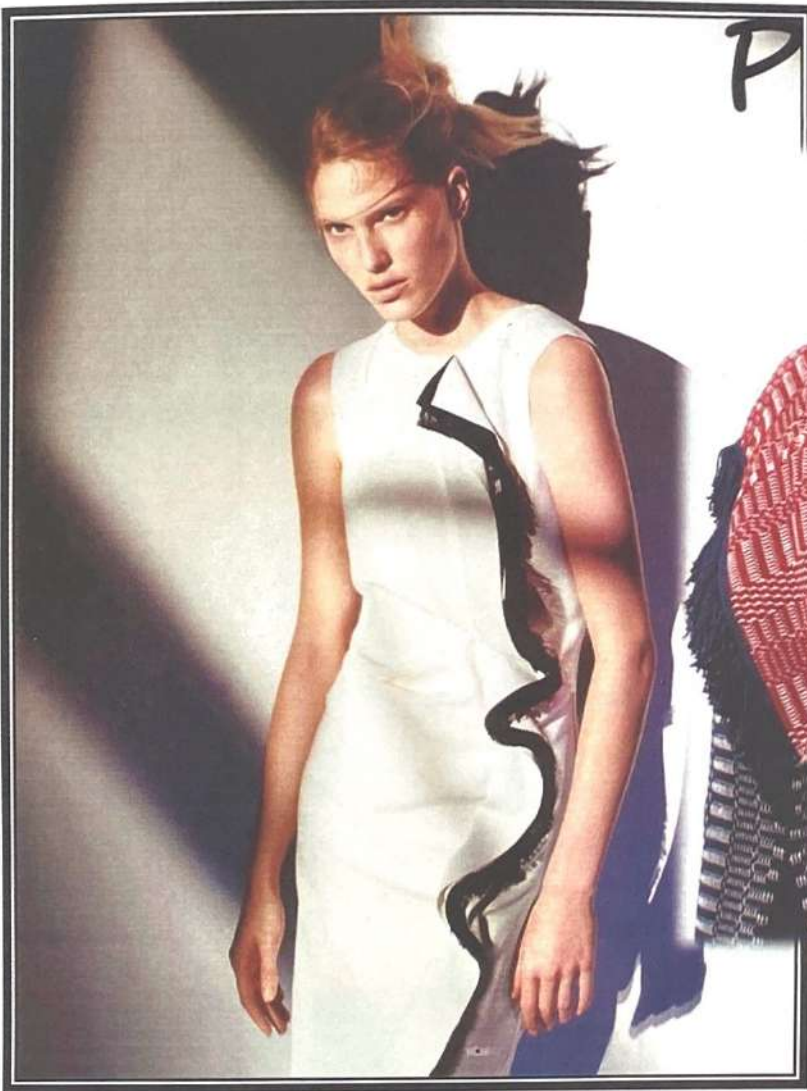


C1625 Organdis - Triplo mm.25



C1624 Raso B / Filo Paillette - Piegato mm.14

# PRECIOUS FRINGES





C1632 Lana D368/10 / Pigalle 2 - Frangia mm.100



C1630 Chiffon / Paillette - Frangia mm.100

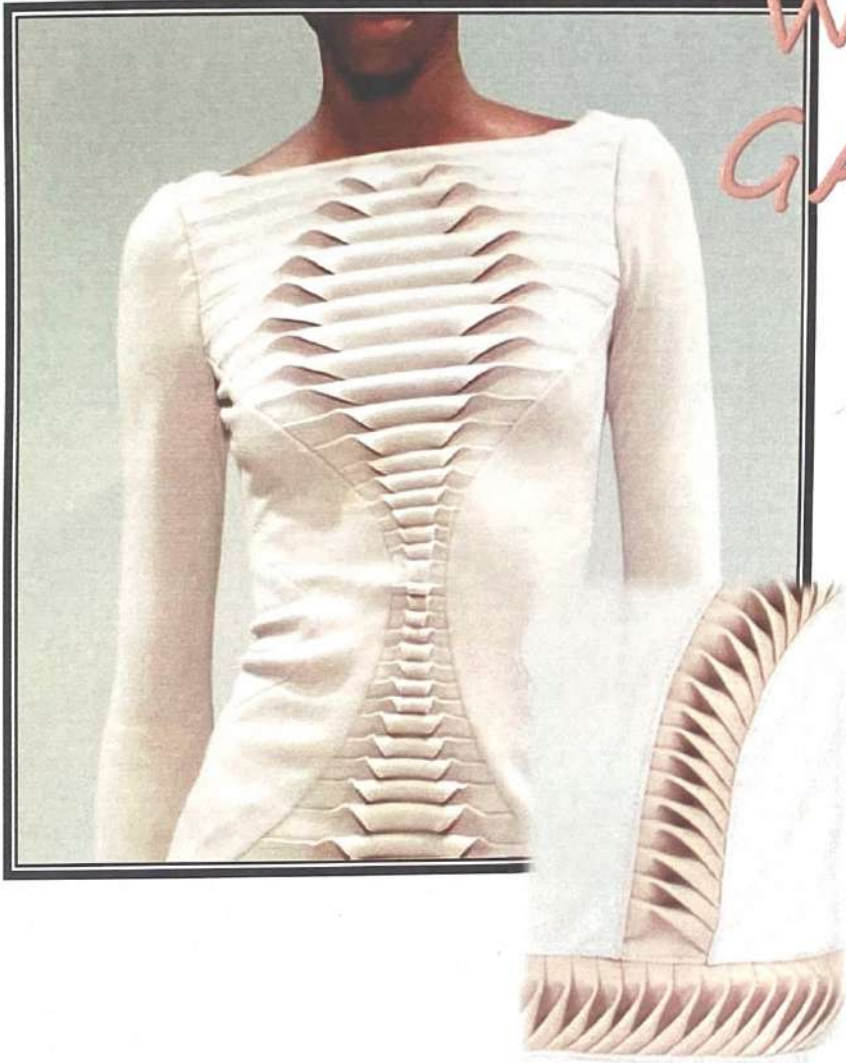


C1643 Eugenia Spillo - Tubetto - 10 Fili Lana 80 mm.20



C1634 Frangia 250006 / Filo Paillette mm.25

# WAVE GAMES

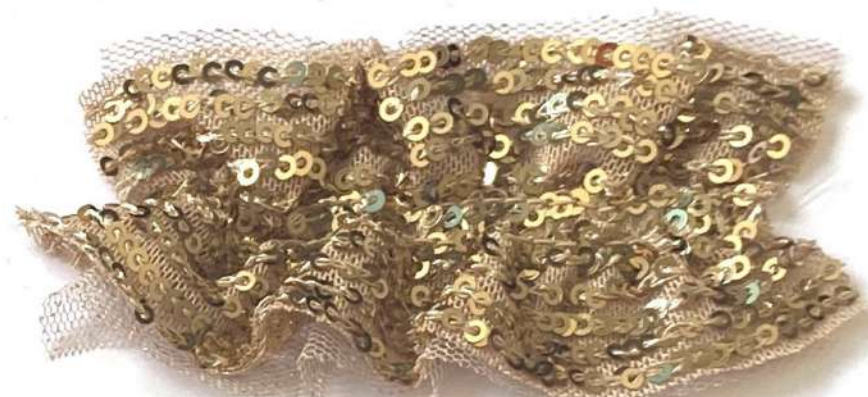




P754 Fea - Plissè Piega Cucita mm.110



C1612 Raso P / 9011 - Profilo mm.12



C1610 Tulle Star / Paillette T - Elan mm.50/40

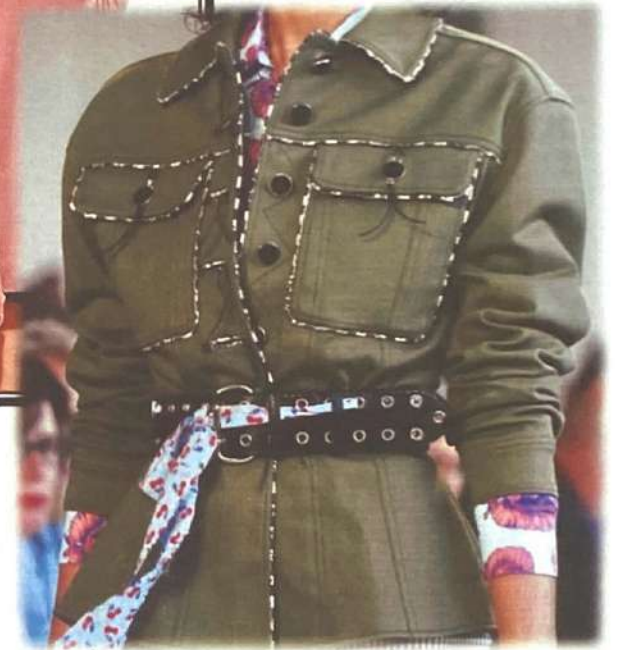


C1653 Poly Silk - Tubetto mm. 3



C1611 Seta Classic - Tubetto - 10 Fili Lana Cry mm.10

# VELVET APPLICATIONS





C1617 Roma 11 / Spongy - Corsia mm.40



C1618 Bolero 6 - Treccia Tubetto 1/2 Fiocco mm.20



C1508 Eugenia - Tubetto 1 Fiocco mm.10



C1371 Bolero 6 - Tubetto 1 Fiocco mm.10



C1620 Bolero 6 - Elan 2 Cuciture mm.50



C1619 Roma 18 - Profilo Cord.P mm.20



# METALLIC TUBULARS





C1628 Betulla - Tubetto 8 Focchi mm.30



C1627 Tulle A / Paillette 14 - Elan mm. 50/35



C1626 Bolero Chic - Treccia Tubetto 1/2 Fiocco mm.20



C1629 Metal - Tubetto 14 Fili Lana 80 mm.20

# BLACK AND WHITE





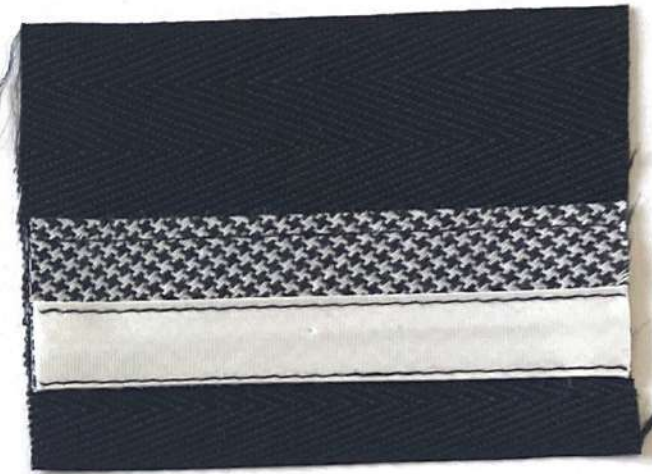
C1647 Pigalle 2 - Tubetto 10 Fili Lana 80 mm.20



C1635 Cannetè / Filo Paillette mm.20



C1648 Eugenia Spillo - Tubetto MG / 14 Fili Lana Cry mm.10



C1649 Polispigato / Ask / Raso B - Banda mm.60



C1650 Fleur - Tubetto mm.5



C1651 Dentelle 10 - Tubetto MG / 10 Fili Lana Cry mm.10

# ECOFUR





C1655 Zarina - Profilo Fiocco mm.30



C1636 Zarina 2 - Tubetto 1 Fiocco e 1/2 mm.30



C1637 Zarina 2 / Passafino mm.75



C1652 Zarina - Tubetto 1 Fiocco mm.20



Zarina 12 - Liscio mm.30

# SHADES OF STYLE





P757 Tulle A - Plissé Cuciti Sorfilati Filo Pesca mm.95/80/65



P468 Taft - Lory Doppio mm.40/25



P759 Poly Silk - Lory mm.60



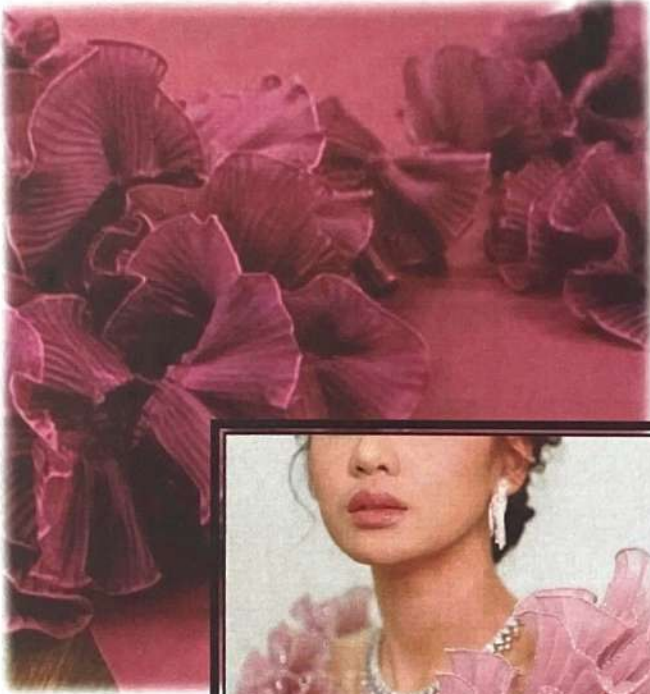
C1417 Galaxy - Tubetto 1 Fiocco mm.10



C1653 Poly Silk - Tubetto mm.3



# ELEGANT STYLE





P756 Lamè 8 - Plissé Filo Paillette mm.40



C1656 S28 New - Tubolare Elastico mm.40



C1587 Rock - Tubetto mm.5



C1641 Ask W2 - Tubetto 2 Fiocchi mm.20

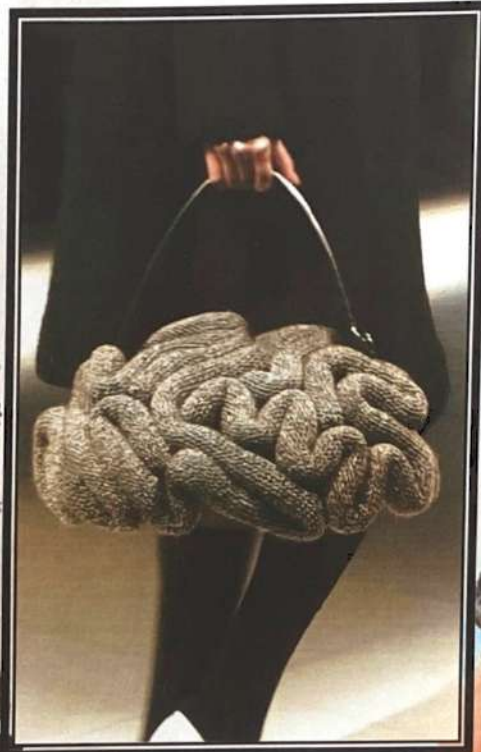


C1657 Poly Silk - Piegato mm.14



C1640 Poly Silk - Tubetto mm.15

# SOFT WEAVES





C1644 Wool Check - Sfrangiato mm.30



C1645 Golf - Profilo mm.12/12



C1646 Scotland - Piegato mm.25



CP Patrizia Scotland / FCO / Raso B



C1654 Ask W2 - Tubetto 5 Focchi mm.25

# CASUAL CHIC





**CP Patrizia - Sangallo 7 / FCO**



**C1638 Seta Classic - Tubetto 5 Fili Lana 80 mm.10**



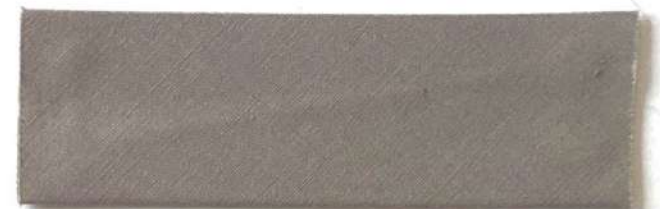
**C1661 Poly Silk - Piegato mm.25**



**C1639 Tresca - Tubetto 5 Fiocchi mm.25**



**C1660 Crepe - Sfrangiato mm.32**



**C1662 Cot Stretch - Piegato mm.25**

# ORIENTAL INSPIRATION





P494 Ask - Plissé mm.50



C1659 Afef 4 - Tubetto mm.40



C1621 Afef 3 - Tubetto Cord.E / Fiocco mm.7



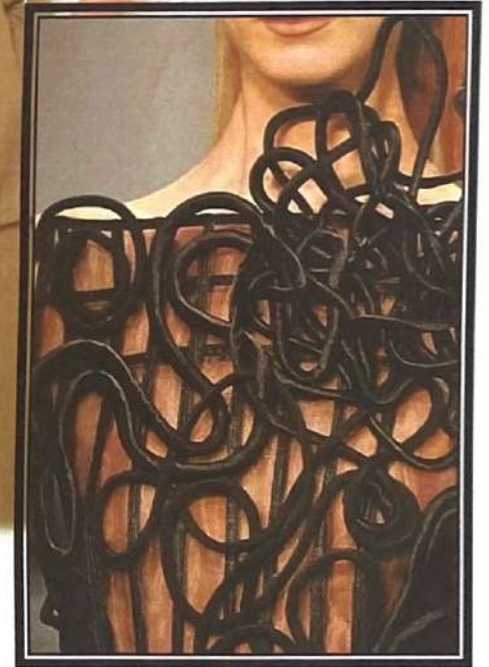
C1658 Afef - Profilo mm.12/12



CP Susy - R.I. / Art. 1539



# MILITARY CHIC





CP Susy - Roma 17 / Grosgrain



C1429 Roma 15 - Profilo mm.12/12



C1538 Roma 17 - Tubetto 1/2 Fiocco mm.10



C1177 London / Spongy - Corsia mm.35



C1666 London - Tubetto 8 Fili Lana Cry mm.7



C1665 Roma 11 - Profilo mm.12/12

# SWEET FEMININITY





C1673 Poly Silk - Arricciato mm.60



C1674 S28 New - Corsia mm.60



C1429 Roma 15 - Profilo mm.12/12



C1633 Roma 11 / Filo Paillette - Piegato mm.25



C1653 Poly Silk - Tubetto mm.3



C1675 S28 New - Tubetto mm.5

# TARTAN STYLE





C1670 Scotland - Sfrangiato mm.25



P762 Poly Silk - Nelly mm.50



C1671 Monel - Tubetto MG / Fili Lana Cry mm.8



C1653 Poly Silk - Tubetto mm.3



C1672 Bolero 6 - Tubetto Mezzo Fiocco mm.15

# MEN'S DETAILS





C1025 Spinato 9 / Arturo - Banda / Tubetto mm.45



CP Susy - R.I. / Nastro Gommato



C1667 Kerala - Girocoppe mm.12



C1668 Kerala - Profilo mm.12/12



C1522 Roma 11 - Profilo mm.9/4



C1669 Arturo - Tubetto mm.5



# ROMANTIC NIGHT





P760 S23 - Plissé mm.100



C1664 Eugenia Spillo / Spongy - Corsia mm.65



C1663 Raso P / Filo Paillette Piegato mm.10



P761 S23 - Plissé mm.50

# SOFT WEAVES





P758 Chiffon - Plissé Sorfilo Croc mm.110



C 1609 S1 - Profilo Frastagliato mm.9



C1683 S27 - Tubetto Fiocco + Cord.E mm.15



C1683 S27 - Tubetto Fiocco + Cord.E mm.15



C1682 Mogador - Tubetto 8 Fiocchi mm.35

# DENIM TIME





C1676 Denim 16 / Filo Paillette - Metà Piegato Doppio mm.20



C1679 Denim 1 - Tubetto Fiocco mm.10



C1677 Denim 16 - Banda Impunturata mm.25



C1680 Denim 16 - Piegato mm.25

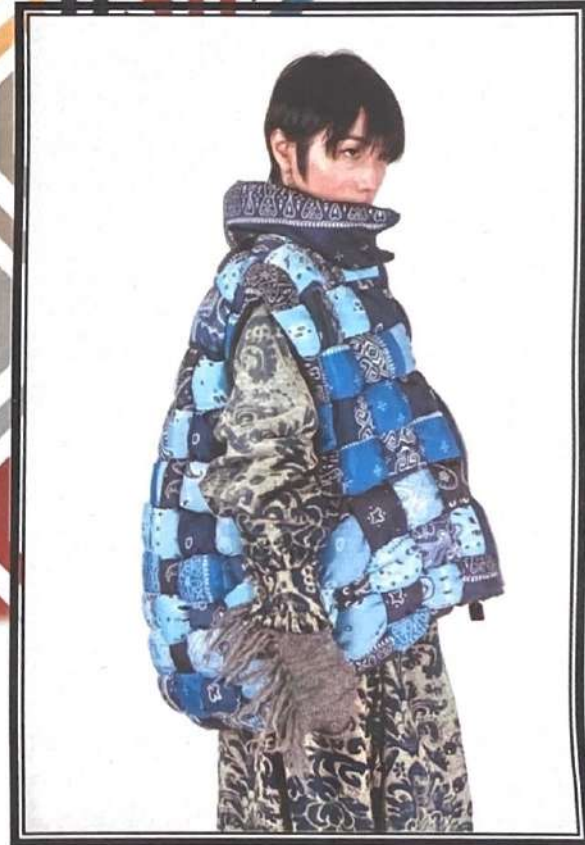


C1678 Denim 16 - Profilo mm.9/4



C1681 Denim 16 / Filo Paillette Metà Piegato mm.20

# GEOMETRIC MOOD





C1684 London ST - Piegato mm.40



C1685 Alberto ST - Tubetto 1 Fiocco mm.15



C1686 Alberto ST - Tubetto 1 Fiocco + Cord.M mm.20



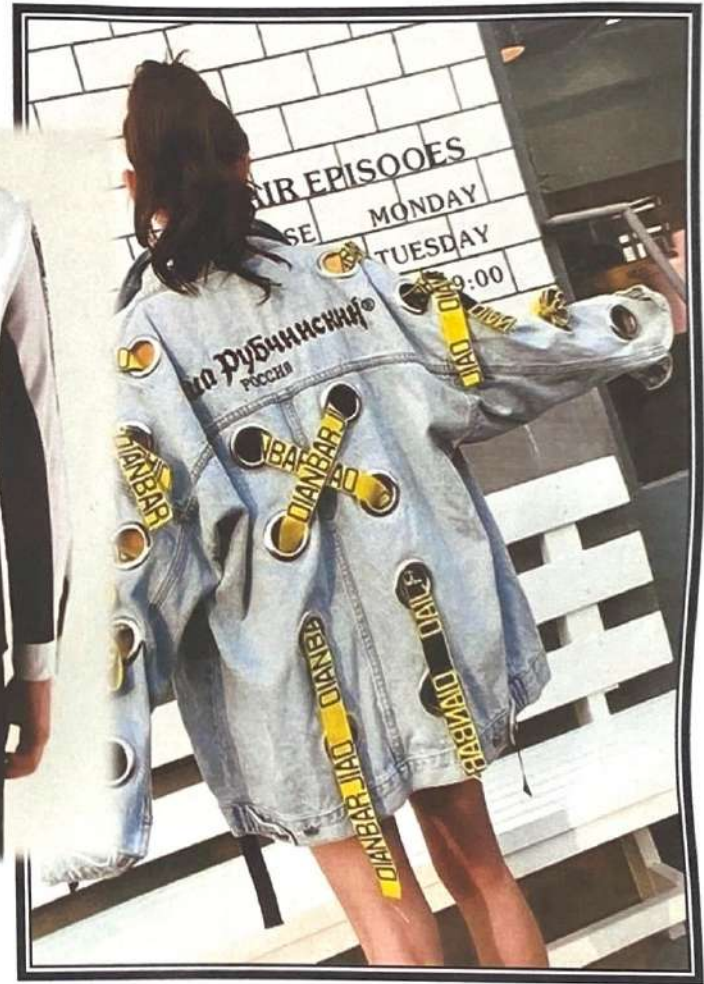
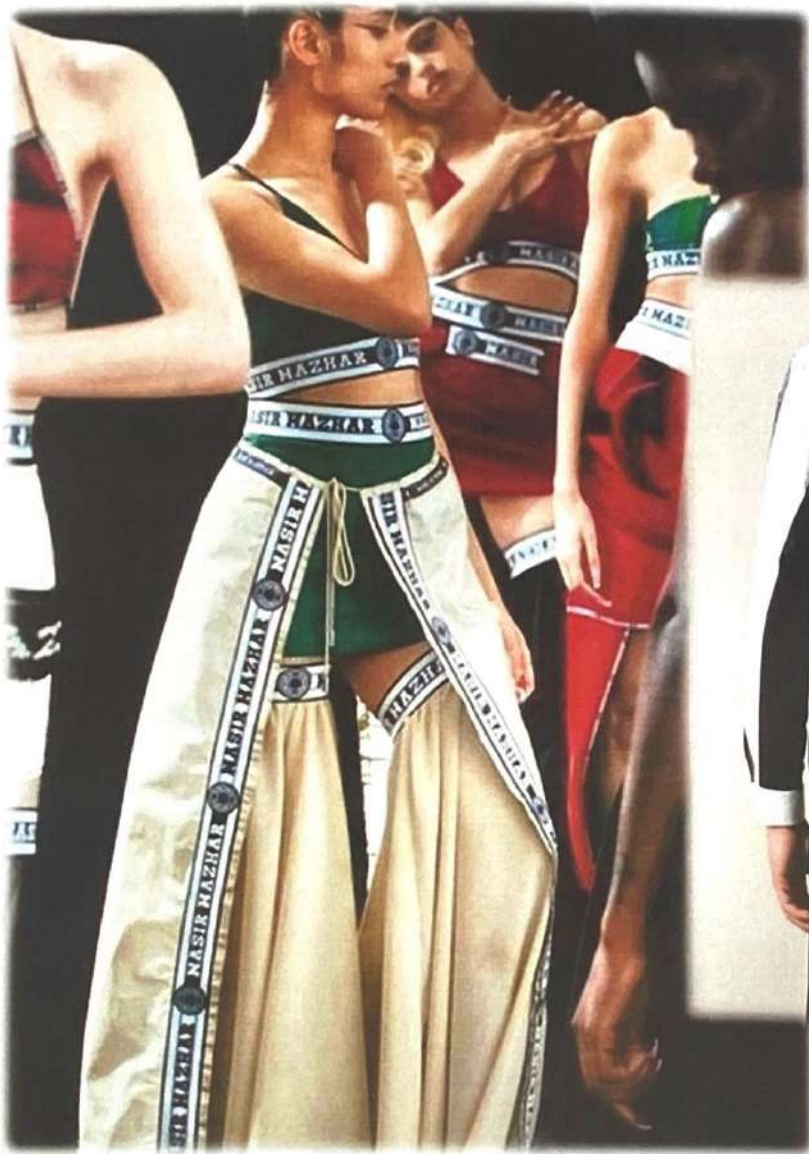
P701 Sparta ST - Plissé mm.90



C1687 Alberto ST - Tubetto 7 Fiocchi mm.30



# GRAPHIC LINES





CP Susy - Kerala / Doppioraso - Logo



CP Susy - Ramon / Doppioraso - Logo



C1691 Nastro Elastico N42 mm.30



C1689 Cannetè ST mm.25



C1688 Alberto ST mm.40



C1690 Grosgrain ST mm.38

# REGIMENTAL LINES





C1692 Regimental - Tubetto 8 Focchi mm.30



C1693 Raso B Adesivato - Banda mm.50



C1695 Regimental - Tubetto mm.5



C1694 Alberto ST - Tubetto 5 Focchi mm.25



CP Patrizia - Regimental / Raso B



**TOPP** ITALIA

INSPIRED BY TEXTILES

**TOPP** 

MANAGED BY TEXTILES

tel. +37 030 99 95 05 / [www.toppitalia.it](http://www.toppitalia.it) / [italia@topitalia.it](mailto:italia@topitalia.it) / [export@topitalia.it](mailto:export@topitalia.it)